



TUBULAR & NDT SERVICES:



1-TUBULAR INSPECTION SERVICES
Premium drilling tools

WE ARE A THIRD PARTY OILFIELD TOOLS INSPECTION COMPANY, A TOP PROVIDER OF OILFIELD TOOLS INSPECTION SERVICES IN NORTH AFRICA.

OUR INSPECTION SERVICES CAN BE DONE AT THE CLOSEST NDT FACILITY OR IN THE RIG SITE BY ONE OF ITS MOBILE INSPECTION UNITS TO MEET ANY OF THE FOLLOWING API SPECIFICATIONS: RP7G, RP7G-2, DS-1 WITH LATEST EDITION. NDT SERVICE ALSO PROVIDES ALTERNATIVE AND CUSTOM INSPECTIONS UPON REQUEST. A THOROUGH INSPECTION NOW WILL ENSURE THE RELIABILITY OF THE PRODUCT TO PREVENT NON-PRODUCTIVE TIME CAUSED FROM TOOLS DAMAGE.

APPLICABLE INSPECTION CATEGORIES:

1-CATEGORY I INSPECTIONS

- VISUAL INSPECTION OF THREADS AND TUBE

2 -CATEGORY II INSPECTIONS

- ABOVE PLUS
- OD/ID GAUGE
- THREAD GAUGING
- UT WALL THICKNESS

3-CATEGORY III INSPECTION

- ABOVE PLUS
- ELECTRO-MAGNETIC INSPECTION (EMI)---
- BLACK LIGHT INSPECTION

4- CATEGORY IV INSPECTION

- ABOVE PLUS
- MPI SLIP/UPSET AREAS-

5- CATEGORY V INSPECTION

- ABOVE PLUS -
- BLACKLIGHT CONNECTION-
- HEAT CHECKING-
- UT SLIP/UPSET -

6- REPAIR SERVICES¹

- STANDARD AND LATHE REFACING-



APPLICATIONS



DRILL PIPE INSPECTION

IS CARRIED OUT AT REGULAR INTERVALS DETERMINED BY THE CLIENT, ACCEPTED STANDARDS AND PRACTICES AND DEPENDENT UPON DRILLING CONDITIONS AND PAST HISTORY.

NDT SERVICE: UTILIZES ELECTROMAGNETIC INSPECTION TECHNOLOGY (EMI) UNITS TO PROVIDE MOBILE, ELECTRONIC OPERATIONS. THE UNITS ALLOW FOR HIGH SPEED OPERATION AND INCREASED PRODUCTIVITY. WITH ITS DURABLE DESIGN AND PROVEN DEPENDABILITY IT IS ENGINEERED TO MEET OR EXCEED THE INDUSTRY'S TOUGHEST QUALITY STANDARDS AND HARSHTEST CONDITIONS. IT IS CAPABLE OF INSPECTION PIPE SIZES RANGING FROM 2-3/8" TO 6-5/8" OD; OUR SERVICES WOULD SUPPORTED WITH FOLLOWING CHECK:

- VISUAL INSPECTION OF BODY & THREADS,
- THREAD CLEANING & DOPE APPLICATION,
- UT WALL THICKNESS MEASUREMENTS & DIMENSIONAL INSPECTION,
- MPI TO IDENTIFY CRACKS & OTHER DEFECTS,
- TOOL JOINT INSPECTIONS –VT & DIMENSIONAL,
- DRIFTING ASSESSMENT,
- TRACEABILITY,
- QUALITY ASSURANCE



BOTTOM HOLE ASSEMBLY INSPECTION TOOLS:



- 1 - HWDRILL PIPE.
- 2 - DRILL COLLARS.
- 3 - BHA COMPONENTS.
- 4 - PREMIUM DOWNHOLE TOOLS.

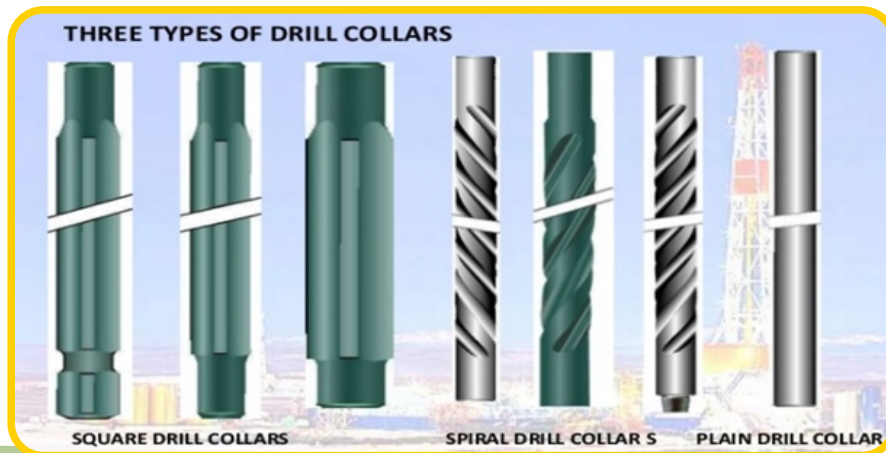
HEAVY WEIGHT RILL PIPE INSPECTION





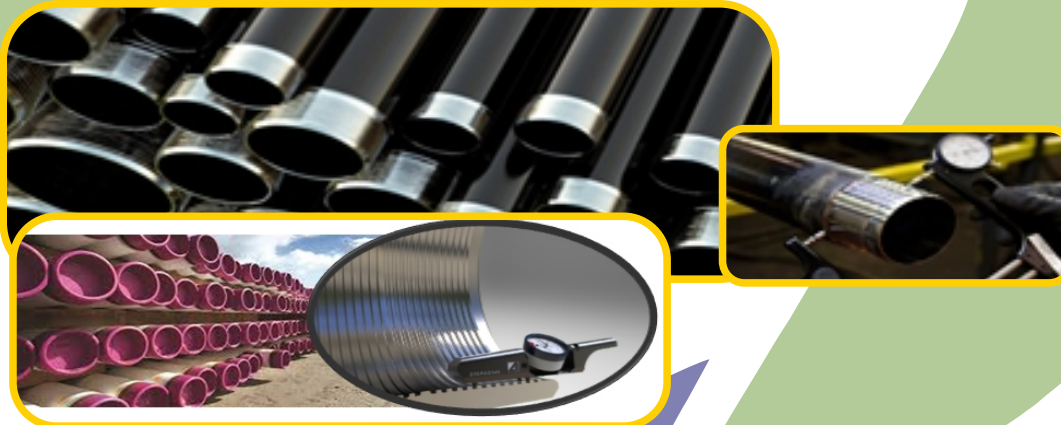
Inspection available according DS-1 & API Standard (Drill collar and HWDP tool joint) BHA
DS-1 CAT 3-5

- Visual connection
- Black light connection
- Dimensional 3
- Elevator & Slip groove
- Heat Checking



OIL COUNTRY TUBULAR GOODS (OCTG) INSPECTION

- *Casing and Tubing Inspection*
- *Premium Connections / API Connections Inspection*
- *Visual Thread Inspection*
- *Full Length API Drift*
- *Full Length Magnetic Particle Examination*
- *Special End Area Inspection*



NDT SERVICES is working to ensure compliance with international standards thread



HANDLING TOOLS

Handling Tools play a major part in any modern drilling operation.

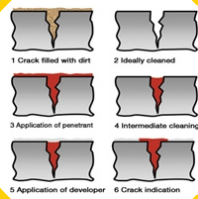
They are used for suspending, moving and rotating tubular in and around the well center and on the drill floor.

Although the majority of these tools are used to dynamically suspend and move tubulars in a vertical direction, some tools, such as the SJH elevator, serve a wider array of function by moving tubulars from horizontal to vertical position.

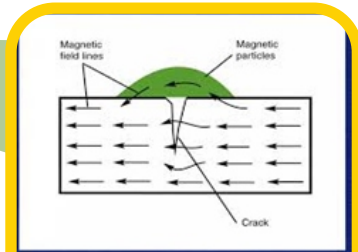
CCTE-NDT SERVICES works to ensure the safety and security of equipment from all defects resulting from mechanical stresses and failures arising during the use and after the manufacturing process depending on the application methods adopted by the International Organization for Non-Destructive Control ASNT.

2-NON DISTRUCTIF TESTING METHODES

- Visual
- MPI (magnetic particle inspection)
- DPI (dye penetrant inspection)
- EMI (electromagnetic inspection)
- UT (ultrasonic inspection)
- RT (radiographic testing)



MT fluorescent TESTING



MT TESTING





REFERENCES TO CCTE-NDT SERVICES

DS-1 LATEST EDITION

API RP7G-2 / REFIRMED, APRIL 2015 EDITION

API RP 7G / 2004

API RP 8B EIGHTH EDITION, MAY 2014

API RP 7L REFIRMED, AUGUST 2012

API SPEC 5D FIFTH EDITION, OCTOBER 2001/ EFFECTIVE DATE: APRIL 30, 2002

ASME BVC.V-2015

Non Destructive Testing NDT



:Non Destructive Testing NDT

- › (Electromagnetic Testing (ET
- › (Magnetic Particle Testing (MT
- › (Dye Penetrant Testing (PT
- › (Ultrasonic Testing (UT
- › (Radiographic Testing (RT
- › (Visual and Optical Testing (VT





شركة ضفاف ليبيا الأولى
للخدمات النفطية
Dhifafa Libya Company



JAUGEAGE DES CAMIONS CITERNES



Oil Control Materials and Tubular

- › .(Drill Pipe, Tubing and Casing (All Sizes
- › Handing Tools
- › Subs,X-Over,Stabilizer,Drill Collars and HWDP
- › Rig Parts
- › Controls thicknesses
- › .(Electromagnetic Calibration(E.M.I)(All Sizes
- › .(Electromagnetic Inspection (E.M.I

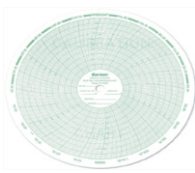




Calibration and verification of measuring instruments



- › Galvanometer
- › Pressure gauge
- › Chart recorder
- › Amperemeter
- › Thermometer
- › Minitest
- › All Electronic Devices



(UT (Ultrasonic Testing



UT -Ultrasonic Testing

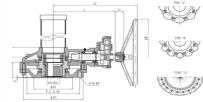
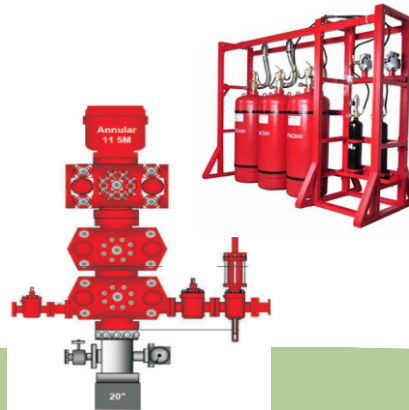
UT -Ultrasonic Testing

This kind of testing is commonly used to conduct examinations and make UT can be used to detect imperfections or changes in materials as well as to determine thicknesses of objects and to monitor pipework
UT is a very useful and versatile NDT method. Some of the advantages of this form of inspection include its sensitivity to both surface and subsurface flaws making it a highly accurate method. In addition, the depth of penetration or measurement is superior to all other NDT methods as detailed images can be produced with automated

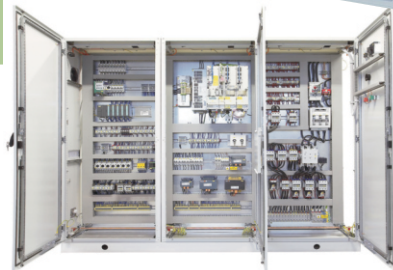


Devices Pressure Gas and Steam

- Fuel tanks
- Propane tanks and mobile
- Bottle Gas, Nitrogen, Oxygen, Methane
- Operator valve
- Safety valve
- CHIKSAN
- ACCUMULATOR UNIT
- Test BOP
- CHOKE MANIFOLD



Devices and Electrical Installation



- .Welding power unit and Generators
- . Earthing and earth wells
- .The protection devices:large caliber fuses
- .Discontactor , relay thermal circuit breakers
- .Electrical cabinets / cells
- . Power switches and fuse disconnectors
- .Devices Pneumatics and Hydraulics





شركة ضفاف ليبيا الأولى
للخدمات النفطية
Dhifafa Libya Company

Tubular Running Services

Introduction to tubular:

Running casing is the process of screwing together pieces of pipe on a rig floor using special equipments ; power tong, power unit and lowering them into a hole using differnt handling equipments : hand slips elevator single joint elevator etc...During running casing, the pipes are fitted together and lowered into the hole. A steel casing is lowered into the open hole - the action is called running casing.



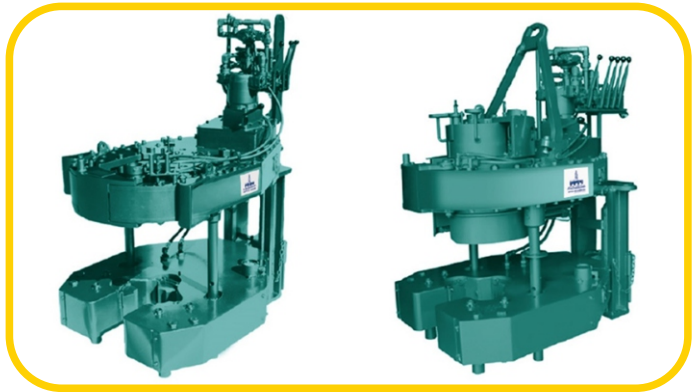
شركة ضفاف ليبيا الأولى
للخدمات النفطية
Dhifafa Libya Company



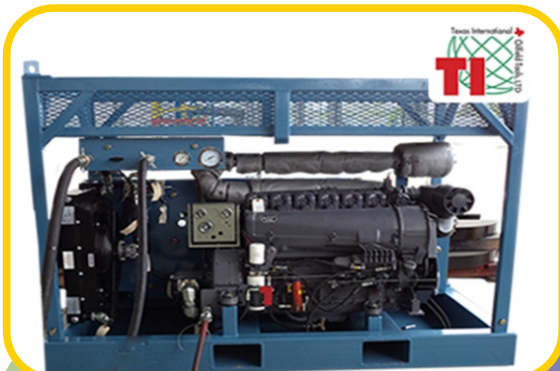
POWER TONG



POWER TONG



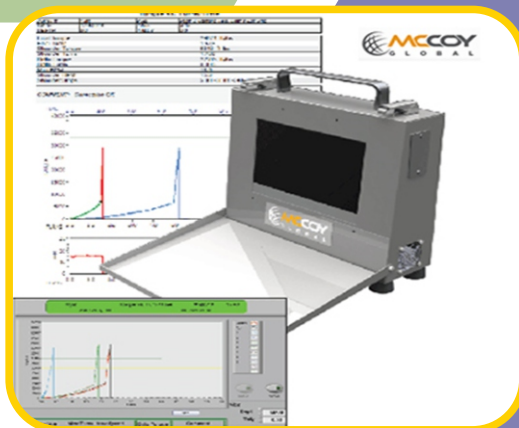
POWER UNIT



HANDLING EQUIPMENTS



TORQUE TURN SYSTEM





TORQUE TURN SYSTEM

Torque turn system Monitor and control tubular connection power tong make-up reliably, accurately, and easily.

- Torque turn system is a software tool that interacts with external control hardware to provide real-time monitoring and control of tubular connection power tong make-up. It allows you to easily specify make-up parameters, control the make-up process, and evaluate quality.
- Using the software, you can monitor torque, turns, and rotational speed during make-up. You have the option of controlling speed during make-up as well.

Controls are based on either final torque or final turns.

TORQUE TURN SYSTEM

- Torque Turn Monitoring System comes with:
- Calibration management system
- Automatic "Start Recording" and "Dump Valve Release"
- Automatic descriptive comments with optional override
- Optional pressure test system is available
- Torque turn system increases the safety of your people and gives you the information you need to ensure make-up conforms to manufacturers' specs. You can review results from previous make-ups and create a number of reports for further analysis and information.





شركة ضفاف ليبيا الأولى
للخدمات النفطية
Dhifafa Libya Company

Removing old paint and dirt through
sandblasting and repainting

ID OUR VIEW

We aim to be the most competitive and productive
service organization in the country.

Our core competencies in Services and Parapetroleum
Activities and Realization of Industrial Works are continually
being improved to be the best in their category. They are at
the heart of who we are.

Our chosen markets will be determined solely by our ability
to be the most competitive and consistently provide
unequaled service to our customers.



شركة ضفاف ليبيا الأولى
للخدمات النفطية
Dhifafa Libya Company



EXPERT SANDBLASTING AND PAINTING
SANDBLASTING - PAINTING - REPAIRS



Synthetic presentation

Dhifafa Libya Company offers a complete and professional range of services for work of: Sandblasting, Painting, Marking and Cleaning and Repair of Metals and Modification

Our expertise allows us to apply different techniques adapted to different needs

Our team is committed to providing quality services and fast turnaround times

Dhifafa Libya Company offers a range of services and services to meet your problems of beautification and protection, and adapts to your needs.

1- JET SANDBLASTING:

SANDBLASTING consists of stripping surfaces, by projection, at more or less high pressure of dry abrasives. The shot peening makes it possible to obtain a better roughness of the steel steps, thus a better catch of the applied primaries.

Sandblasting or shot blasting on ferrous and non-ferrous metals, on metal framing and cladding of industrial buildings, on machine chassis or on any other mecano-welded assembly present in the industrial world.



. Sandblasting of concrete walls made of residential buildings by abrasive blasting



Synthetic presentation

Dhifafa Libya Company offers a complete and professional range of services for work of:

Sandblasting, Painting, Marking and Cleaning and Repair of Metals and Modification

Our expertise allows us to apply different techniques adapted to different needs

Our team is committed to providing quality services and fast turnaround times

Dhifafa Libya Company offers a range of services and services to meet your problems of beautification and protection, and adapts to your needs.

- Sandblasting with abrasive blasting on a steel frame structure
- Sandblasting of interior or exterior walls made of stone or slate in a house undergoing rehabilitation
- Sandblasting of wooden beams and joists
- Sand or grit blasting and treatment
- corrosion protection by applying industrial paints on metal shutters and radiators made of cast iron or steel.
- Sand or grit blasting and treatment
- corrosion protection by applying industrial paints on gates, gates or fence grates made of steel or cast iron.
- Sandblasting and anti-corrosion treatment by applying industrial paints on garden lounges



2 -PAINTING:

The preparation of the pieces is essential in order to create a good adhesion for all types of painting. This process removes all traces of rust, scale, old paint and other unwanted residues.

There are several degrees of sanding:

- SSPC-SP7 (light sanding)
- SSPC-SP6 (commercial)
- SSPC-SP10 (almost white)
- SSPC-SP5 (white)

The type of sanding is chosen according to the coating or the customer's request



Coating rich in zinc

Zinc-rich coatings provide excellent protection against chemicals and corrosion.

This coating can be applied on structures, reservoirs or platforms that are installed in an environment with severe conditions.

Epoxy coating

The epoxy coating provides excellent protection against corrosion, chemicals and may be used as a finishing / finishing layer or as an intermediate.

We use iron silicate as raw material in most cases (all steel parts) and glass ball for stainless steel or aluminum parts





We are able to apply all types of liquid coating for the following applications:

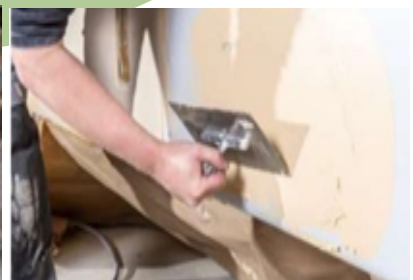
- Marine
- Refinery
- Chemical product
- Paper mill
- Power plant
- Water treatment plant
- Processing plant (metallurgy)
- Steel Structure, Drilling Rig, Reservoir and Storage Tank, Plant and Plant Renewal, Pipeline-length, Pipeline Prefabricated, Plant Piece, Gangway and Platform, Guardrail and Ladder, Trench, Trailer (all types) , Pipe support,
- Wheels etc ...



3-Repairing the bottom of a storage bin

Maintenance of reservoirs with deficiencies in welded joints by means of hazard-fitness studies (Fitness-for-Service, FFS) under optimal safety conditions: the question is whether these failures actually entail risks for the structure and its environment.

Are the thicknesses of the dress, the marginal, the bottom and the connection between the dress and the roof acceptable? Do they go into sizing bins according to the specific rules of codes, even old?





The TAYAR SAHARA engineers also assess the harmfulness of plane defects (cracks, welding defects), discovered in the wall of the tanks during non-destructive inspection campaigns. These calculations, carried out according to the methodologies of the API579-1 / ASME FFS-1 or the BS7910, make it possible to determine if defects out of tolerance present a risk for the integrity of the tank. They also verify the acceptability of the tray bed plan according to Annex B of API653.

Quantum politics

Customer satisfaction commitment

Optimal and rational use of resources

The development of skills

Promotion of the image of the company



N°	Procedures
1	Manual: General Procedures
2	Procedures: Commercial & Marketing
3	Procedures : Engineering
4	Procedures: Procurement
5	Procedures: Project Management
6	Procedures: Quality Management
7	Procedures: Human Resources
8	Procedures: Production Activities



HSE procedures

Procedure INC-ACC- NC-AC-AP	PG-500SAR-05
Radioactivity management procedure	PG-HSE-12
Communication procedure and consultation	PG-HSE-12
Conformity estimation procedure	PG-HSE-12
How to use ladders	PO-HSE-12
Fall protection procedure	PO-HSE-12
Handling procedure	PO-HSE-12
Lifting procedure	PO-HSE-13
Staffing Procedure (EPI)	PO-HSE-13
HSE meetings	PO-HSE-13
Analysis and risk assessment procedure	PO-HSE-13
Road traffic procedure	PO-HSE-13
Periodic inspection procedure	PO-HSE-13





Our strong points:

Our reactivity and the respect of the delays announcements.

- The submission of estimates within 48 hours, or 24 hours depending on the degree of urgency.
- Client service.

Our values:

- The search for a real partnership with our customers.

Put the customer at the center of our concerns. / Respect and satisfaction of our customers.

Professional conscience.

- The professionalism of our teams.
- Partnership with suppliers



item	Equipment	Quantity
01	Fixed sandblasting units	01
02	sandblast cabinet (for small rooms)	01
03	solvent recycler	02
04	sifter and bucket conveyor	01
05	electric compressors	03
06	Blast hoods	12
07	Sandy	12
08	Generator	05
09	Welding machine	05
10	airless pumps	06
11	pneumatic air extractors	06
12	07 bar compressors	08
13	20 bar compressors	1
14	all-terrain vehicle	03
15	2.5T truck	06
16	Forklift	02
17	Mobile crane 30T	01

Nos Equipment





شركة ضفاف ليبيا الأولى
للخدمات النفطية
Dhifafa Libya Company

Human resources:

- (04) site manager,
- (04) HSE manager,
- (4) work conductors,
- (5) team leader, (10) sandblasters,
- (10) industrial painters, (10) laborers
- (02) state engineers in mechanic
- (01) Bachelor's degree in Management
- (01) Bachelor's degree in Finance
- (01) DEUA in Metallurgy
- (04) TS in industrial maintenance



شركة ضفاف ليبيا الأولى
للخدمات النفطية

20 Dhifafa Libya Company



شركة ضفاف ليبيا الأولى
للخدمات النفطية
Dhifafa Libya Company

Toxic waste mixing machine



شركة ضفاف ليبيا الأولى
للخدمات النفطية
Dhifafa Libya Company



SERVICE OF THE ENVIRONMENT CLEANING



Dhifafa Libya Company is an environmental protection company dedicated to the management of waste generated by drilling rigs, with a very efficient staff.

The purpose of the Solids Control Department is to optimize the processing and process of all residual fluids and the solids generated by drilling rigs and well services operations.

Cutting Treatment Unit

Sludge continuous mixing plant model

Continuous soil and solid wastes treatment plant, Capacity of 40 M³ /hour

Description

Mixing plant for treatment of contaminated soil and solid waste materials, Contained to three mixers including dosing devices for two powders, one water, one silicate or other chemical liquid reagent; continuous mixer mdc 200; automatic controlled with control panel



Design parameter:

Plant is designed to work on following conditions:

ambient temperature from -10°C up to 60°C, humidity up to 60% altitude up to 1000 mts

on sea level electric power supply at 400 V. 50 Hz. + 5 %

Soil or Waste Receiving and Dosing Devices

First mixer capacity 6 M³ contained into the upper level, grating installed on top of the first mixer, section of the openings; designed to remove all undesirable

Sludge continuous mixing plant

Cuttings treatment unit

Final third and last mixer with capacity of 3 M³ with one side open for soil load and three sides and the roof closed.

Mixing

Twin shaft horizontal continuous mixers MDC 200 L

Three twin shaft mixers (hopper) with reduction stage, driven by electric motor power 15 Kw for both second and third mixers, 20 Kw for the first mixer. The first mixer has a pneumatic gate for discharge controlled by control panel while both other mixers has open gate for continuous discharge.

The reducer is to assure the exact rotation speed for each mixer m as for the first mixer the speed would be 42 r/min to assure the well homogenization of the sludge m the second and third are 60 and 72 r/min respectively for well mixing and also unloading the finished sludge



The plant could work with two mixers alone as we can use the three mixers depending on the status of the sludge (drill cutting and contaminated soil) to be treated

Note: All motors are well covered for security and safety issues. **Powders Dosing Devices**

Continuous dosing system with speed control of valves controlled by control panel

The system is designed to received powders from transportable silos equipped with screw conveyor transfer systems

Water Dosing Devices

1 Water tank made of plastic, installed near the plant; set of loading valves and level indicators for automatic filling

1 Automatic water dosing system including variable flow pump and magnetic induction type flow meter; water flow regulated by inverter, controlled by control panel



cuttings treatment unit

Sludge continuous mixing plant

The plant is equipped with all sufficient emergency buttons

Each mixer, control cabinet, engineer office ...etc is equipped with extinguisher (generally the plant is equipped with sufficient extinguisher)

All mixers are well covered from the top to ensure the safety of the workers.